



notewise

digital recording software

Recording || 00:05:33

CV-9005
Green vs White

4/18/2013 4:55 PM
Courtroom 12

Time	Speaker	Event
4:55:38 PM		Session Started
4:57:03 PM		Court Opens
4:57:15 PM	Judge	Judge's Remarks
4:58:57 PM	Left Law	Petitioner's Opening Statement
4:59:03 PM	Right Law	Automatic Note
4:59:14 PM	Left Law	Automatic Note
5:02:47 PM		Session Started
5:03:29 PM	Judge	Automatic Note
5:03:38 PM	Right Law	Automatic Note

Quick Notes

Family Court Hearing

- Add Empty Note F2
- Court Opens
- Judge's Remarks Ctrl+D2
- Petitioner's Ope... Ctrl+D3
- Respondent's Opening S...
- Petitioner Sworn In
- Respondent Sworn In
- Petitioner's Case Closed
- Respondent's Case Closed
- Petitioner's Closing Argu...
- Motion
- Objection
- Respondent's Closing Ar...

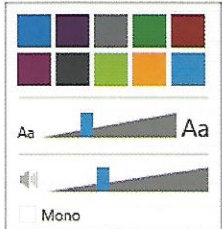
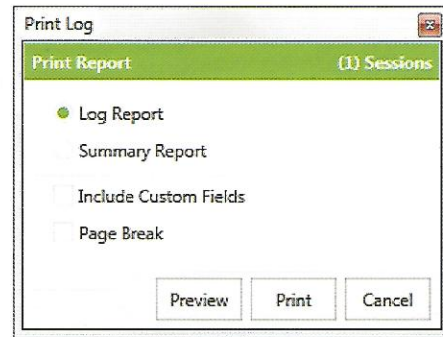
Speech Timeline. Automatic Notes. Post-Logging. 12 tracks of audio. Any Windows Audio Device. Introducing the latest in audio recording innovation: JAVS NoteWise.



Jefferson Audio Video Systems, Inc.

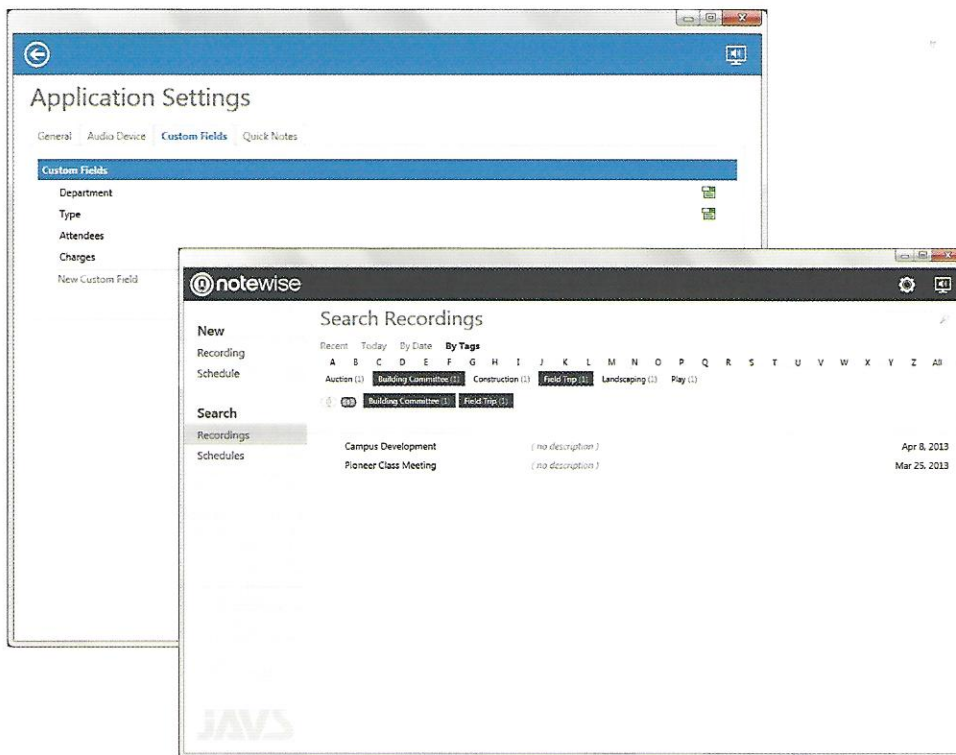
RELIABILITY, BACKUP, AND REPORTING

Confidence monitoring allows you to hear what has been recorded – while recording – just seconds after it has written to the file. A secondary recording path allows the user to configure a redundant location for recordings—even to a location on the local network. Export recordings and logs, as well as produce a PDF report. The user can select the location to where this export is made.



PERSONALIZATION AND ACCESSIBILITY

Choose your favorite theme color from up to ten, color-blind tested colors. A single slider quickly resizes the entire interface to the size most comfortable for you. Normal stereo playback puts all odd-numbered channels into the left speaker, and all even-numbered channels into the right speaker, or select the Mono checkbox to mix all channels into both the left and right channels.



CUSTOM INFORMATION

Search recordings and schedules using custom tags. Start a new recording based on one with similar details. For new recordings, choose from tags you've used before using the NoteWise auto-complete feature, or enter new tags. Easily locate all the recordings featuring a certain speaker or topic. For more permanent types of information, create a custom field as either a generic text field or a drop-down list.

SYSTEM REQUIREMENTS

Processor: Intel Core 2 Duo 2.2 GHz or higher

RAM: 2 GB minimum

Disk Space: 50 MB for installation

Audio Interface: Audio interfaces that have a native WASAPI driver for the edition of Microsoft Windows being used. Native ASIO drivers are required for recording more than 2 channels

Operating System: Windows 7 SP1 or newer (Windows 7 Starter is not supported)

Screen Resolution: 1024 x 768

USB: 2.0 or higher

RECORDING

Format: Ogg Vorbis (.ogg)

File Size: Stereo—15.1KB/s (54.5MB/hour)

4 channel—34.9KB/s (125.8MB/hour)

8 channel—69.6KB/s (250.4 MB/hour)



jefferson Audio Video Systems, Inc.
13020 Middletown Industrial Blvd.
Louisville, KY 40223
800.354.JAVS